

## Deposition and Characterization of SnSe and CuInSe<sub>2</sub> Thin Films by Thermal Evaporation Technique from Synthesized SnSe and CuInSe<sub>2</sub> Sources

(Pengenapan dan Pencirian Filem Nipis SnSe dan CuInSe<sub>2</sub> dengan Kaedah Penyejatan Haba Menggunakan SnSe dan CuInSe<sub>2</sub> Sebagai Bahan Sumber)

NORDIN SABLI, ZAINAL ABIDIN TALIB\*, CHANG CHUNG BIN, WAN MAHMOOD MAT YUNUS, ZULKARNAIN ZAINAL, HIKMAT S. HILAL, JOSEPHINE LIEW YING CHYI & MASATOSHI FUJII

### ABSTRACT

*Tin selenide (SnSe) and copper indium diselenide (CuInSe<sub>2</sub>) compounds were synthesized by high temperature reaction method using combination of sealed ampoule (at relatively low pressure  $\sim 10^{-1}$  Pa without inert gas) and heating at specific temperature profile in rocking furnace. Powder X-Ray diffraction analysis showed that the products involved only single phases of SnSe and of CuInSe<sub>2</sub> only. Using the reaction products as source materials, the SnSe and CuInSe<sub>2</sub> thin films were vacuum-deposited on glass substrates at room temperature. Structural, elemental, surface morphological and optical properties of the as-deposited films were studied by X-Ray diffraction (XRD), energy dispersive X-Ray (EDX) analysis, field emission scanning electron microscopy (FESEM) and UV-Vis-NIR spectroscopy. Single phase of SnSe and CuInSe<sub>2</sub> films were obtained by thermal evaporation technique from synthesized SnSe and CuInSe<sub>2</sub> compound without further treatment.*

*Keywords: CuInSe<sub>2</sub>; SnSe; solid state reaction; source material; thin films*

### ABSTRAK

*Sebatian timah selenida (SnSe) dan kuprum indium diselenida (CuInSe<sub>2</sub>) telah disintesis pada tindak balas bersuhu tinggi menggunakan gabungan ampul yang ditutup kedap (pada kadar tekanan rendah  $\sim 10^{-1}$  Pa tanpa gas lengai) dan pemanasan pada profil suhu khusus dalam relau berayun. Analisis pembelauan sinar-X serbuk mendapati hasil sintesis yang diperolehi adalah SnSe dan CuInSe<sub>2</sub> fasa tunggal. Serbuk yang telah disintesis digunakan sebagai bahan sumber untuk menyediakan filem nipis SnSe dan CuInSe<sub>2</sub> menggunakan kaedah penyejatan dengan haba di dalam vakum. Kajian sifat struktur, komposisi, morfologi dan optik untuk filem yang diaplikasikan dijalankan dengan menggunakan pembelauan sinar-X (XRD), analisis penyerakan tenaga sinar-X (EDX), mikroskopi medan pancaran pengimbasan elektron (FESEM) dan spektroskopi UV-Vis-NIR. SnSe dan CuInSe<sub>2</sub> fasa tunggal dapat diperolehi tanpa melalui rawatan selanjutnya melalui kaedah penyejatan dengan haba di dalam vakum menggunakan sebatian SnSe dan CuInSe<sub>2</sub> yang telah disintesis sebagai bahan sumber.*

*Kata kunci: Bahan sumber; CuInSe<sub>2</sub>; filem nipis; SnSe; tindak balas keadaan pepejal*

### INTRODUCTION

Considerable attention has been paid to prepare metal chalcogenide thin films by different techniques such as chemical bath deposition, chemical vapor deposition, electrodeposition and vacuum evaporation methods (Fujii et al. 1988; John et al. 1994; Pandey et al. 2000; Amaraj et al. 2004; Hilal et al. 2009; Chate et al. 2010; Indirajith et al. 2010; Yunos et al. 2011). Among those, vacuum evaporation is the favorable method to prepare semiconductor thin films for photovoltaic solar cells (Fujii et al. 1988; Tomakin et al. 2011). This is a simple technique that involves easy to control processing parameters, without participation of other atoms or molecules and offers extremely clean interfaces during processing and subsequent consolidation by conducting the experiments under ultra high vacuum conditions (Hass et al. 1993).

However, the source material is crucial in vacuum evaporation technique. Thin film properties depend on the quality of the source material and preparation methodology. Researchers prepare binary, ternary or quaternary compounds in powder form using wet and solid state chemical reactions by introducing and/or replacing a third and fourth element into a metal selenide to tailor the band gap (Chakrabarti et al. 1996). The resulting material is then used as source material in vacuum evaporation. Zulkarnain et al. (2003) and Indirajith et al. (2010) prepared SnSe powders by chemical techniques where the obtained SnSe needed further processing, such as washing and annealing to obtain pure SnSe and to remove secondary phases and unreacted excess elemental substances, such as selenium from the desired compound. The single phase SnSe powder is then used as a source material for vacuum evaporation. Yunos et al. (2011) prepared CuSnSe films

by evaporation technique using direct mixed powder of copper, tin and selenium in stoichiometric ratio (2:1:3) as source. The resulting as-deposited and annealed thin films involved two phases of  $\text{Cu}_2\text{SnSe}_3$  and  $\text{SnSe}$ . Yamaguchi et al. (2009) synthesized the copper zinc tin sulfide (CZTS) from its constituent elements by heat treatment followed by a two-stage sulfurization process. Kheraj et al. (2013) used the excess sulfur to facilitate the formation of stoichiometric CZTS phase without going through an extra stage of sulfurization.

Muller et al. (2006) prepared the  $\text{CuInSe}_2$  thin films by radio frequency sputtering in argon atmosphere using a  $\text{CuInSe}_2$  ceramic target. A nearly stoichiometric film was obtained at substrate temperature below  $200^\circ\text{C}$ . Hasan et al. (2000) prepared  $\text{CuInSe}_2$  thin film on glass substrates using high vacuum evaporation technique in stacked layers in sequence of elemental indium, selenium and copper. However, stoichiometric films needed further annealing treatment at  $350^\circ\text{C}$ .

Vacuum evaporation method has successfully been used for depositing metal chalcogenides of binary, ternary or quaternary compounds. A number of techniques were used to evaporate the synthesized source materials in the vacuum evaporation systems. Thermal evaporation, laser ablation, sputtering, electrical arc discharge and plasma heating have all been reported by Koch (2007). Particle size, uniformity and homogeneity of the source material affect the resulting film properties distinctively when synthesizing selenide-based thin film semiconductor electrodes (Fujii et al. 1988; Kim et al. 2009; Zainal et al. 2003).  $\text{SnSe}$  and  $\text{CuInSe}_2$  thin films are becoming increasingly important in modern applications, such as solar cells and photodetectors, due to their high absorption coefficients and direct band gaps (Fearheiley 1986; Hasan et al. 2000; Indirajith et al. 2010; Zainal et al. 2003). This paper describes a simple technique to prepare source materials for  $\text{SnSe}$  and  $\text{CuInSe}_2$  thin films. An easier ampoule sealing technique and modified rocking tube furnace is to provide proper mixing during melting to increase sample homogeneity. The system was thus designed to maintain homogenous mixing of constituent elements in the desired stoichiometric ratio while avoiding contamination. Then  $\text{SnSe}$  and  $\text{CuInSe}_2$  thin films were prepared by the thermal vacuum deposition, each from

its corresponding source material, which was originally produced by the simple technique. All source materials and films were characterized with crystallinity, composition, surface morphology, and optical properties.

## EXPERIMENTAL DETAILS

The polycrystalline  $\text{SnSe}$  compound was synthesized from its constituent elements, Sn and Se, which were weighed in stoichiometric ratio (1:1) and sealed in a quartz ampoule at base pressure of 0.33 Pa. The polycrystalline  $\text{CuInSe}_2$  compound was also synthesized from its constituent elements, Cu, In and Se, which were weighed in stoichiometric ratio (1:1:2) and sealed in a quartz ampoule at same base pressure used for  $\text{SnSe}$ . The elements, Sn, Cu and Se were purchased from Alfa Aesar with nominal purity 99.8%, 99.5% and 99.5%, respectively. Indium was purchased from Sigma Aldrich with a nominal purity 99.99%. The ampoules were heated using a rocking furnace. In preparing  $\text{SnSe}$  compound, the furnace temperature was raised to  $230^\circ\text{C}$  from room temperature and kept for 2 h to allow selenium to diffuse into tin. The temperature was then raised to  $250^\circ\text{C}$  and kept for 2 h to allow both individual components to completely melt and then raised to  $1000^\circ\text{C}$ . Furnace temperature ramp rate was set at  $5^\circ\text{C}/\text{min}$ . To ensure proper mixing and sample homogeneity, the furnace was kept for 2 h and then rocked at a frequency 3 cycle/min with an angle  $45^\circ$  for 48 h. After the desired time, the heated ampoule was then quenched rapidly in liquid nitrogen to get the required compound (Devaney 1987). The profile of the furnace temperature is shown in Figure 1.

In preparing  $\text{CuInSe}_2$  compound, the temperature was initially raised to  $200^\circ\text{C}$  and kept for 5 h to allow indium and selenium to diffuse into copper. The temperature was then raised to  $900^\circ\text{C}$ . After 2 h of waiting time, the furnace was rocked for 72 h to ensure proper mixing and sample homogeneity. The ramp-up and ramp-down rates of temperature were set at  $2^\circ\text{C}/\text{min}$  and rocking frequency was set at 3 cycles/min with  $45^\circ$  angle. The furnace temperature profile is shown in Figure 2.

The  $\text{SnSe}$  and  $\text{CuInSe}_2$  compounds were taken out from the ampoules and were ground into fine powders

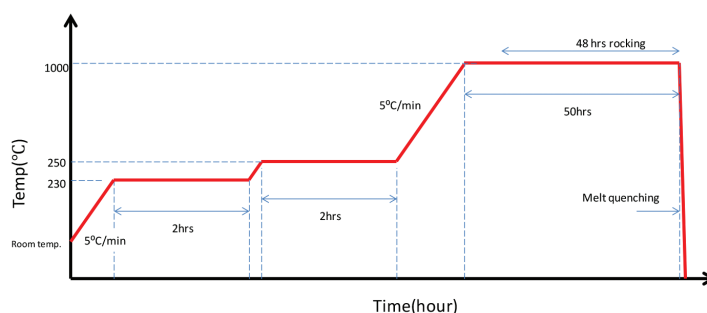


FIGURE 1. Temperature profile of the rocking furnace to prepare the  $\text{SnSe}$  compound

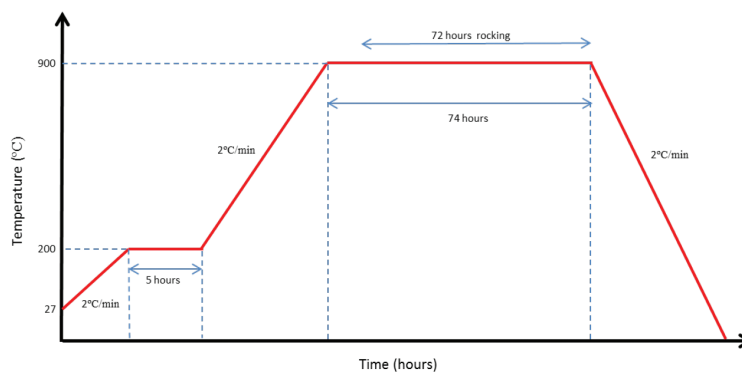


FIGURE 2. Temperature profile of the rocking furnace to prepare the  $\text{CuInSe}_2$  compound

for XRD analysis. The XRD patterns were measured on an XPERT-PRO X-ray diffractometer with  $\text{Cu K}\alpha$  ( $1.54056 \text{ \AA}$ ). After confirming their structures by XRD, the prepared compounds were then used as source materials.

Properly cleaned microscopic glass slides were used as substrates. Substrate cleaning procedure was described earlier (Sabli et al. 2013). Thin films of  $\text{SnSe}$  and  $\text{CuInSe}_2$  were deposited by a thermal vacuum evaporator (Model Edwards AUTO 306) on pre-cleaned glass substrates that were kept at room temperature. A molybdenum boat was used to evaporate the source material. The substrate was kept 14 cm above the boat. Synthesized  $\text{SnSe}$  powder (0.10 g) was put in the molybdenum boat and the pressure inside the vacuum chamber was pumped down to  $2.5 \times 10^{-4} \text{ Pa}$ . Prior to deposition, the compound was pre-heated for 1 h at a temperature lower than the compound melting point. By gradually increasing the applied current, the material in the boat turned to molten state and then evaporated.  $\text{CuInSe}_2$  thin film was prepared by the same procedure described for  $\text{SnSe}$ .

The films were characterized by XRD, using the diffractometer described above. The surface morphology of the films was observed by a field emission scanning electron microscope FESEM (Nova NanoSEM 230). The atomic compositions of the as-deposited thin films were investigated by EDX (Oxford Instruments model 7353) attached to the FESEM. A high surface profilometer (Ambious-Tech XP-200) was used to measure thin film thickness. Optical absorption spectra were measured in the wavelength range 200–800 nm on a Shimadzu UV-VIS-NIR spectrometer.

## RESULTS AND DISCUSSION

X-ray diffraction patterns for  $\text{SnSe}$  and  $\text{CuInSe}_2$  compounds. The resulting  $\text{SnSe}$  and  $\text{CuInSe}_2$  compounds were originally obtained as a single ingot and granules, respectively. The powder XRD patterns for both synthesized  $\text{SnSe}$  and  $\text{CuInSe}_2$  compounds are shown in Figures 3 and 4. The XRD peaks were compared with the standard data for  $\text{SnSe}$  (JCPDS Card number: 98-009-1204) and  $\text{CuInSe}_2$  (JCPDS Card number: 98-005-0070). The XRD pattern of the

synthesized  $\text{SnSe}$  powder, Figure 3, shows that the peaks are well matched with the reference card and the (111) plane emerges as the strongest orientation in accordance with earlier literature (Haas et al. 1993). The complete absence of any elemental Sn and Se peaks in the XRD pattern indicates that the sample powder is a single phase of  $\text{SnSe}$  compound with no un-reacted Sn and Se precipitates. No other non-stoichiometric compounds were detected.

The XRD pattern of the synthesized  $\text{CuInSe}_2$  powder, Figure 4, shows that the peaks are well matched with the reference card and the (112) plane emerges as the strongest orientation, in accordance with earlier literature (Muller et al. 2006). The absence of any peaks corresponding to elemental Cu, In or Se in the XRD indicates that the sample powder is a single phase of  $\text{CuInSe}_2$  compound free of unreacted elements and other non-stoichiometric compounds.

The high temperature reaction method, using combination of evacuated sealed ampoule at comparatively low pressure of the order of  $10^{-1} \text{ Pa}$  without inert gas, programmed temperature control and rocking furnace, has successfully yielded stoichiometric source materials for vacuum thermal deposition.

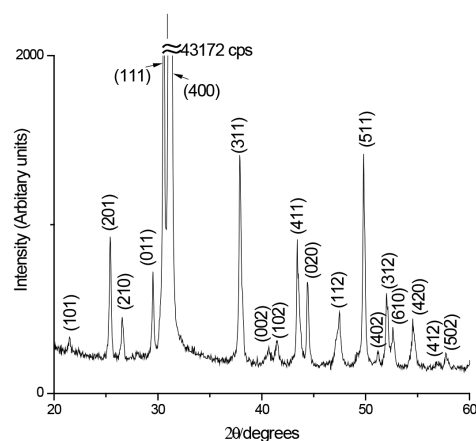


FIGURE 3. XRD pattern for synthesized  $\text{SnSe}$  powder

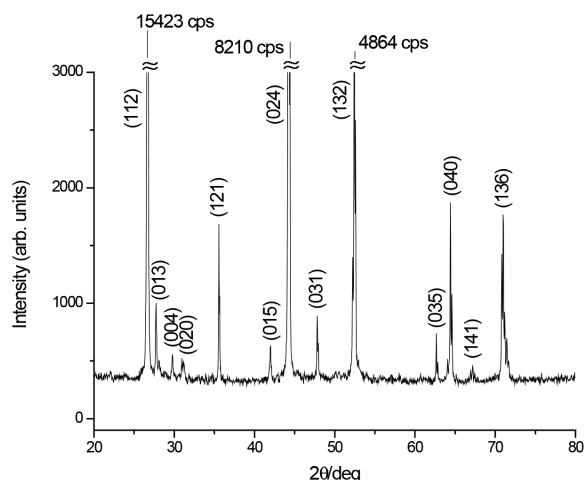
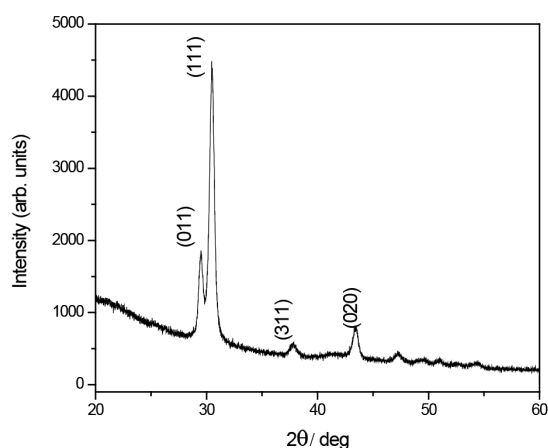


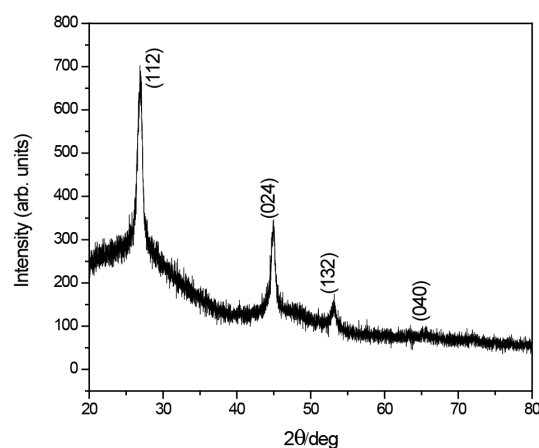
FIGURE 4. XRD pattern for synthesized  $\text{CuInSe}_2$  powder

#### X-RAY DIFFRACTION PATTERNS FOR $\text{SnSe}$ AND $\text{CuInSe}_2$ THIN FILMS

The XRD patterns recorded for the as-deposited  $\text{SnSe}$  and  $\text{CuInSe}_2$  thin films are shown in Figure 5. All peaks can be assigned based on the corresponding crystal structure of each compound,  $\text{SnSe}$  and  $\text{CuInSe}_2$  and the assigned indices are presented in the figures. Each of the  $\text{SnSe}$  and the  $\text{CuInSe}_2$  thin films exhibited only a single phase with 1:1 and 1:1:2 stoichiometric ratios, respectively. The  $\text{SnSe}$  film showed an orthorhombic space group  $\text{Pnma}$  ( $a$ : 11.6 Å,  $b$ : 4.2 Å,  $c$ : 4.5 Å), whereas the  $\text{CuInSe}_2$  film showed a tetragonal space group  $\text{I-42d}$  ( $a$ : 5.8 Å,  $c$ : 11.6 Å) crystal structure. The peak intensities of the  $\text{CuInSe}_2$  thin film are ten times lower than those of the  $\text{SnSe}$  film. The thickness values for the  $\text{SnSe}$  and the  $\text{CuInSe}_2$  thin films prepared using 0.10 g of powder were 571 and 429 nm, respectively, as measured by profilometry. Although the films showed comparable thicknesses, the peak intensities of the films showed large differences. The  $\text{CuInSe}_2$  film exhibited poor crystallinity.



(a)



(b)

FIGURE 5. XRD patterns for thin films deposited on glass substrates (a)  $\text{SnSe}$  and (b)  $\text{CuInSe}_2$

The grain size ( $G$ ) values for the films were calculated using the Scherrer's formula:

$$G = (0.9\lambda) / (\beta \cos\theta), \quad (1)$$

where  $\lambda$  is the wavelength of  $\text{CuK}\alpha$  (1.5405 Å),  $\beta$  is the full width at half maximum intensity of the peak and  $\theta$  is Bragg's angle of the corresponding diffraction peak. The measured inter-planar distance ( $d$ -spacing) values for both  $\text{SnSe}$  and  $\text{CuInSe}_2$  films, together with corresponding standard values, are shown in Tables 1 and 2. Since the FWHM values also give information about crystallite quality, large FWHM values suggest that the films, especially  $\text{CuInSe}_2$  film, involve imperfections and disorders. As described above, the weak intensities of the peaks for the  $\text{CuInSe}_2$  film indicate poor crystallinity.

#### EDX FOR $\text{SnSe}$ AND $\text{CuInSe}_2$ THIN FILMS

Energy dispersive X-Ray analysis (EDX) spectra were measured for  $\text{SnSe}$  and  $\text{CuInSe}_2$  thin films. Five different points were measured on each film, each point having a scan area of  $1 \mu\text{m} \times 1 \mu\text{m}$ . The averaged atomic % values of each element with standard deviations of the films are shown in Table 3. Since the standard deviations of the films are small, both as-grown films show homogeneous compositions. For  $\text{SnSe}$  film, the average at% values of the constituent elements, Sn:  $43.35 \pm 0.64\%$  and Se:  $56.65 \pm 0.64\%$ , indicate nearly stoichiometric level (50:50). For  $\text{CuInSe}_2$  film, the measured average at% values of the Cu, In and Se elements,  $22.32 \pm 0.16\%$ ,  $24.30 \pm 0.27\%$  and  $53.39 \pm 0.17\%$ , respectively. Although these results are almost consistent with the XRD results, the atomic contents still deviate from the stoichiometric level (25:25:50). The difference indicates an existence of tiny parts of non-reacted elements and/or amorphous phase. The Se contents of both films exceed the stoichiometric level. Free unreacted amorphous form Se may be present in the film.



TABLE 1. Comparison between the XRD results of SnSe thin film and JCPDS ref. card #98-009-1204

2 $\theta$ (°)	d-spacing (Å)		$\beta$ (°)	Crystallite size (nm)	(hkl)	Compound
	Observed	JCPDS				
29.42	3.03	3.03	0.57	15.7	(011)	SnSe
30.35	2.93	2.93	0.57	15.7	(111)	SnSe
37.67	2.39	2.38	0.57	16.1	(311)	SnSe
43.54	2.08	2.08	0.57	16.4	(020)	SnSe

TABLE 2. Comparison between the XRD results of CuInSe<sub>2</sub> thin film and JCPDS ref. card #98-005-0070

2 $\theta$ (°)	d-spacing (Å)		$\beta$ (°)	Crystallite size (nm)	(hkl)	Compound
	Observed	JCPDS				
26.77	3.32	3.34	1.04	8.2	(112)	CuInSe <sub>2</sub>
44.24	2.01	2.04	1.04	8.6	(024)	CuInSe <sub>2</sub>
53.01	1.72	1.74	1.04	8.9	(132)	CuInSe <sub>2</sub>
65.15	1.43	1.45	1.04	9.5	(040)	CuInSe <sub>2</sub>

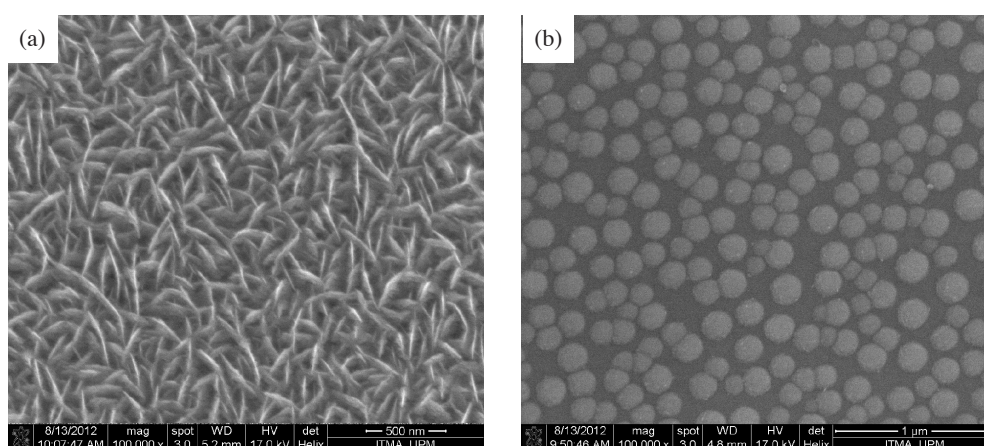
FESEM FOR SnSe AND CuInSe<sub>2</sub> THIN FILMS

FESEM micrographs for SnSe and CuInSe<sub>2</sub> thin films are shown in Figure 6. Figure 6(a) shows that the SnSe film consists of many stacked flakes, with length values ranging from 151 to 351 nm, and thickness values ranging from 28 to 35 nm, perpendicular to the substrate surface. Figure 6(b) shows that the CuInSe<sub>2</sub> film consists of isolated spherically-shaped particles, with diameter ranging from 84 to 197 nm. Both films showed clear shapes which can be directly measured. For the CuInSe<sub>2</sub> film, each particle is isolated on the substrate and does not form continuous interconnected layer. As such, the film would not be suitable for use in photo electrodes and other applications. This can be improved by the proper selection of the substrate, with relatively high surface energy enough to interact with the CuInSe<sub>2</sub>.

OPTICAL PROPERTIES OF SnSe AND CuInSe<sub>2</sub> THIN FILMS

The uv/visible spectra were measured, in the range of 200 - 800 nm, for the as-deposited SnSe and CuInSe<sub>2</sub>

thin films. Figure 7(a) and 7(b) shows plots of  $(\alpha h\nu)^2$  vs. photon energy ( $h\nu$ ) for both SnSe and CuInSe<sub>2</sub> films, respectively, where  $\alpha$  is the measured absorption coefficient calculated from the experimental value of absorbance ( $A$ ) and measured thickness ( $t$  in nm unit) using the relation  $\alpha = 2.303A/t$  (Singh et al. 2011). The  $2.303A/t$  is a derived equation from  $\alpha t = 2.303 \log I/I_0$ , where the relationship between incident intensity and the penetrating light intensity is given by  $I = I_0 e^{-\alpha t}$  (Mustafa 2013). The linearity in the relationship of  $(\alpha h\nu)^2$  vs. ( $h\nu$ ) for both films indicates that both films have direct band gaps. Since measured thickness values by high surface profilometer (Ambious-Tech XP-200) was 571 and 429 nm for SnSe and CuInSe<sub>2</sub> thin films, the estimated direct optical band gap ( $E_g$ ) were 1.23 and 1.51 eV, respectively. The value for SnSe is consistent with the reported value (1.21 eV) (John et al. 1994). On the other hand, the band gap for CuInSe<sub>2</sub> values is larger than literature value (1.41eV) (Sakata & Ogawa 2000). From the XRD and the absorption measurements, the CuInSe<sub>2</sub> thin film shows larger FWHM value and larger absorption coefficient than the SnSe film,

FIGURE 6. FESEM micrographs for thin films for (a) SnSe and (b) CuInSe<sub>2</sub>

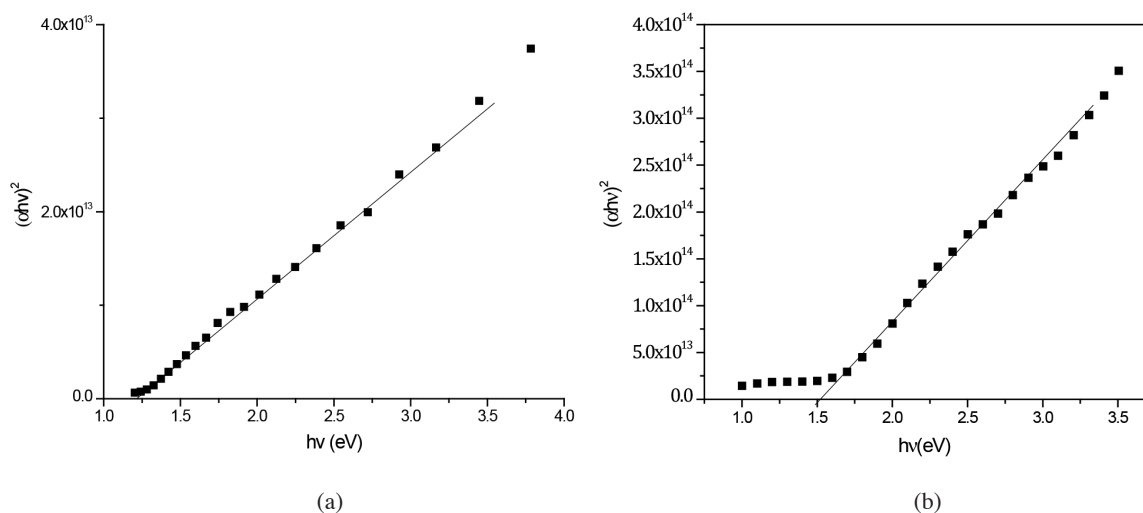


FIGURE 7. Optical absorption spectra showing plots of  $(\alpha hv)^2$  vs. photon energy for thin films for (a) SnSe and (b) CuInSe<sub>2</sub>

which indicates that the crystallinity of the CuInSe<sub>2</sub> thin film is poorer than that of the SnSe film. The fact that band gap value increases with increased disorder, as the results show here, is well documented (Banerjee et al. 2000; Hilal et al. 2009; Lippens & Lannoo 1989; Zyoud et al. 2013). Vacuum deposition for ternary compounds is presumably more difficult to control than binary compounds. To prepare high quality CuInSe<sub>2</sub> thin film we need to control deposition parameters more precisely, namely evaporation temperature, evaporation speed, substrate temperature and base pressure.

#### ELECTRICAL PROPERTIES OF SnSe AND CuInSe<sub>2</sub> THIN FILMS

The sheet resistance measurements yield valuable information about conduction mechanism in thin film semiconductors. The electrical properties of the SnSe and CuInSe<sub>2</sub> thin films were studied at room temperature Hall measurements in van der Pauw configuration. The values of sheet resistances for SnSe and CuInSe<sub>2</sub> were  $1.99 \times 10^2 \Omega\text{cm}$  and  $9.62 \times 10^{-3} \Omega\text{cm}$ , respectively, which is in the range of semiconductor at room temperature which is generally  $\sim 10^{-2}$  to  $10^9 \Omega\text{cm}$  (Shimura 1989). Summary of Hall effects measurement is shown in Table 4. The positive sign of the Hall coefficient confirms the p-type conductivity of both SnSe and CuInSe<sub>2</sub> films. p-type is typical conductivity for SnSe and CuInSe<sub>2</sub> film and totally consistent with earlier report (Fray & Lloyd 1979; Indirajith et al. 2010). The fact that the value of sheet resistant for SnSe and CuInSe<sub>2</sub> is within the semiconductor range and p-type behavior indicates the potential of this materials to be used as absorber material in thin film hetero-junction solar cells.

#### CONCLUSION AND FUTURE WORK

SnSe and CuInSe<sub>2</sub> compounds were prepared using a modified method by combining evacuated ampoule and

rocking furnace, for the first time. The compounds were then used as source materials to prepare thin films of SnSe and CuInSe<sub>2</sub>. The SnSe film consists of many stacked flakes, whereas the CuInSe<sub>2</sub> consists of isolated spherical-shaped particles. Both films were single phased with polycrystalline nature. The XRD results were consistent with earlier literature and with standards; The SnSe showed an orthorhombic structure, while the CuInSe<sub>2</sub> was a tetragonal. Thus the modified preparation system to prepare the compounds described here could be a future method of choice to produce source materials suitable for vacuum thermal evaporation manufacturing of binary and ternary metal chalcogenide thin films. Using this technique in preparing quaternary metal chalcogenide compounds, as source materials, is also worth for future study.

#### ACKNOWLEDGEMENTS

Support donated by the Ministry of Education of Exploratory Research Grant Scheme Grant No. 5527051 and UPM Research Grant Scheme is acknowledged.

#### REFERENCES

- Amaraj, L., Jayachandran, M. & Anjeeviraja, C.S. 2004. Preparation and characterization of tin diselenide thin film by spray pyrolysis technique. *Materials Research Bulletin* 39: 2193-2201.
- Banerjee, R., Jayakrishnan, R., Banerjee, R. & Ayyub, P. 2000. Effect of the size-induced structural transformation on the band gap in CdS nanoparticles. *Journal of Physics: Condensed Matter* 12: 10647.
- Chakrabarti, R., Maity, A.B., Maity, B., Dutta, J., Chaudhuri, S. & Pal, A.K. 1996. Effect of Ga incorporation in polycrystalline CuInSe<sub>2</sub> films. *Vacuum* 47: 1371-1378.
- Chate, P.A., Hankare, P.P. & Sathe, D.J. 2010. Characterization of cadmium selenide films for photovoltaic applications. *Journal of Alloys of Compounds* 505: 140-143.

- Devaney, C.M. 1987. Method for making semiconductor crystal. *United States Patent* US Patent 4634493 (November 2010) <http://www.freepatentsonline.com/4634493.html>.
- Fearheiley, M.L. 1986. The phase relations in the Cu,In,Se system and the growth of CuInSe<sub>2</sub> single crystals. *Solar Cells* 16: 91-100.
- Fray, A.F. & Lloyd, P. 1979. Electrical and optical properties of thin p-type films prepared by vacuum evaporation from the chalcopyrite CuInSe<sub>2</sub>. *Thin Solid Films* 58: 29-34.
- Fujii, M., Kawai, T. & Kawai, S. 1988. Photoelectrochemical properties of cadmium chalcogenide thin films prepared by vacuum evaporation. *Solar Energy Materials* 18: 23-35.
- Haas, V., Gleiter, H. & Birringer, R. 1993. Synthesis of nanostructured materials by the use of a thermophoretic forced flux system. *Scripta Metallurgica* 28: 721-724.
- Hasan, M.F., Subhan, M.A. & Mannan, K.M. 2000. The optical and electrical properties of copper indium di-selenide thin films. *Optical Materials* 14: 329-336.
- Hilal, H.S., Ismail, R.M.A., El-Hamouz, A., Zyoud, A. & Saadeddin, I. 2009. Effect of cooling rate of pre-annealed CdS thin film electrodes prepared by chemical bath deposition: Enhancement of photoelectrochemical characteristics. *Electromica Acta* 54: 3433-3440.
- Indirajith, R., Srinivasan, T.P., Ramamurthi, K. & Gopalakrishnan, R. 2010. Synthesis, deposition and characterization of tin selenide thin films by thermal evaporation technique. *Current Applied Physics* 10: 1402-1406.
- John, K.J., Pradeep, B. & Mathai, E. 1994. Tin selenide (SnSe) thin films prepared by reactive evaporation. *Journal of Materials Science* 29: 1581-1583.
- Kheraj, V., Patel, K.K., Patel, S.J. & Shah, D.V. 2013. Synthesis and characterization of Copper Zinc Tin Sulphide (CZTSe) compound for absorber material in solar-cells. *Journal of Crystal Growth* 362: 174-177.
- Kim, H., Kim, J., Jung, W. & Yoon, D. 2009. Effect of starting materials on the properties of solid-state reacted barium titanate powder. *Journal of Ceramic Processing Research* 10: 753-757.
- Koch, C.C. 2007. *Nanostructured Materials: Processing, Properties, and Applications*. 2nd ed. Norwich, New York: William Andrew Publishing. pp. 47-90.
- Lippens, P.E. & Lannoo, M. 1989. Calculation of the band gap for small CdS and ZnS crystallites. *Physical Review B* 39: 10935-10942.
- Muller, J., Nowoczin, J. & Schmitt, H. 2006. Composition, structure and optical properties of sputtered thin films of CuInSe<sub>2</sub>. *Thin Solid Films* 496: 364-370.
- Mustafa, F.A. 2013. The structural and optical characteristics of polyvinylpyrrolidone doped with nano crystal naf films. *Natural and Applied Sciences* 4: 125-141.
- Pandey, R.K., Mishra, S., Tiwari, S., Sahu, P. & Chandra, B.P. 2000. Comparative study of performance of CdTe, CdSe and CdS thin films-based photoelectrochemical solar cells. *Solar Energy Materials & Solar Cells* 60: 59-72.
- Sabli, N., Talib, Z.A., Yunus, W.M.M., Zainal, Z., Hilal, H.S. & Fujii, M. 2013. CuZnSnSe thin film electrodes prepared by vacuum evaporation: Enhancement of surface morphology and photoelectrochemical characteristics by argon gas. *Materials Science Forum* 756: 273-280.
- Sakata, H. & Ogawa, H. 2000. Optical and electrical properties of flash-evaporated amorphous CuInSe<sub>2</sub> films. *Solar Energy Materials & Solar Cells* 63: 259-265.
- Shimura, F. 1989. Basic semiconductor physics. In *Semiconductor Silicon Crystal Technology*, edited by Shimura, F. San Diego: Academic Press. p. 82.
- Singh, R.S., Bhushan, S., Singh, A.K. & Deo, S.R. 2011. Characterization and optical properties of CdSe nanocrystalline thin films. *Digest Journal of Nanomaterials and Biostructures* 6: 403-412.
- Tomakin, M., Altunbas, M., Bacaksiz, E. & Celik, S. 2011. Current transport mechanism in CdS thin films prepared by vacuum evaporation method at substrate temperatures below room temperature. *Thin Solid Films* 520: 2532-2536.
- Yamaguchi, T., Kubo, T., Maeda, K., Niiyama, S., Imanishi, T. & Wakahara, A. 2009. Fabrication of Cu<sub>2</sub>ZnSnS<sub>4</sub> thin films by sulfurization process from quaternary compound for photovoltaic device applications. In *Proceedings of the International Conference on Electrical Engineering*, Shenyang, China 5-9 July: 1-4.
- Yunos, M.A.S.M., Talib, Z.A., Yunus, W.M.M., Sulaiman, M.Y.M., Chyi, J.L.Y. & Paulus, W.S. 2011. X-ray diffraction analysis of thermally evaporated copper tin selenide thin films at different annealing temperature. *Jurnal Sains Nuklear Malaysia* 23: 46-52.
- Zainal, Z., Nagalingam, S., Kassim, A., Hussein, M.Z. & Yunus, W.M.M. 2003. Tin selenide thin films prepared through combination of chemical precipitation and vacuum evaporation technique. *Materials Science* 21: 225-233.
- Zyoud, A., Saa'deddin, I., Khudruj, S., Hawash, Z.M., Park, D.H., Campet, G. & Hilal, H.S. 2013. CdS/FTO thin film electrodes deposited by chemical bath deposition and by electrochemical deposition: A comparative assessment of photo-electrochemical characteristics. *Solid State Sciences* 18: 83-90.
- Nordin Sabli, Zainal Abidin Talib\*, Chang Chung Bin, Wan Mahmood Mat Yunus & Josephine Liew Ying Chyi  
Department of Physics  
Universiti Putra Malaysia  
43400 Serdang, Selangor  
Malaysia
- Zulkarnain Zainal  
Department of Chemistry  
Universiti Putra Malaysia  
43400 Serdang, Selangor  
Malaysia
- Hikmat S. Hilal  
SSERL, Department of Chemistry  
An-Najah N. University, PO Box 7  
Nablus, West Bank  
Palestine
- Masatoshi Fujii  
Department of Molecular Science  
School of Medicine  
Shimane University, Izumo  
Shimane, 693-8501  
Japan

\*Corresponding author; email: zainalat@science.upm.edu.my

Received: 2 July 2013

Accepted: 13 September 2013